



INSTITUT  
POLYTECHNIQUE  
DE PARIS

# Ecole Polytechnique

## 2023 - 2024

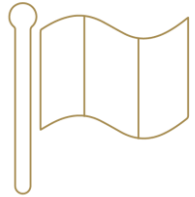
---

Wassila SHERVILL

Head of Marketing and Business Development

07/08/2023

# ABOUT US



Created in **1794**



**France**

in World Top 200  
Most International Universities  
(THE 2023)

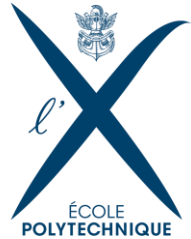


***Paris*** Region near  
Versailles  
Campus stretches over **160**  
**hectares**



**Undergraduate and Graduate  
Education** in Sciences and  
Technology  
(Bachelor to PhD)

# INTERNATIONAL RANKINGS



***1<sup>st</sup> (France) and 34<sup>rd</sup> (world)***  
***Most international universities***

THE 2023



**INSTITUT  
POLYTECHNIQUE  
DE PARIS**

***2<sup>nd</sup> (France) and 38<sup>th</sup> (world)***  
***1,300 best world universities***

QS World University Rankings 2023



**INSTITUT  
POLYTECHNIQUE  
DE PARIS**

***1<sup>st</sup> (France) and 15<sup>th</sup> (world)***  
***Employer reputation***

QS World University Rankings 2022



# GLOBAL NETWORK



# OUR PILLARS



## EDUCATION

Multidisciplinary science courses

**3,700 students**



## RESEARCH

Pure  
& applied

**23 laboratories**

**501 research professors**

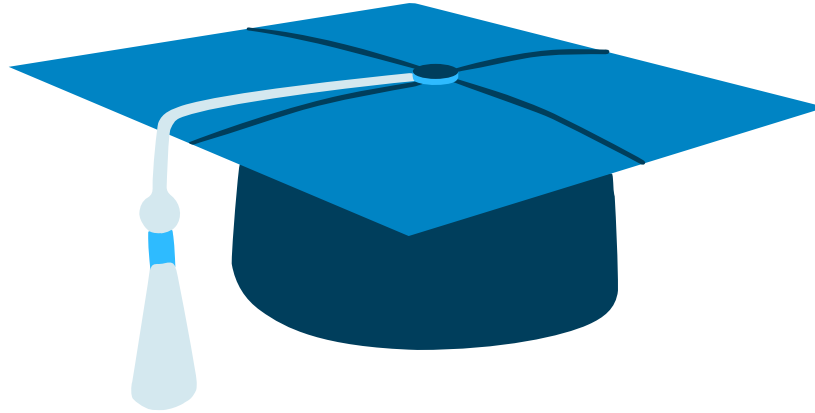


## INNOVATION

In tune with students and labs

**More than 400 start-ups  
created since 2010**

# OUR VALUES



## EXCELLENCE

Ecole Polytechnique is recognized for his high quality education and been a magnet for talent from around the world. Through teaching, research, and innovation

## ACCESSIBLE

Ecole Polytechnique provides an academically excellent and accessible education to all

## HUMAN SCALE

Ecole Polytechnique's low ratio of student-to-faculty and instructional staff promotes intensive teaching

# NO LIMITATION



5 Nobel prize laureants



3 Présidents  
Numerous  
politiciens  
and ministers



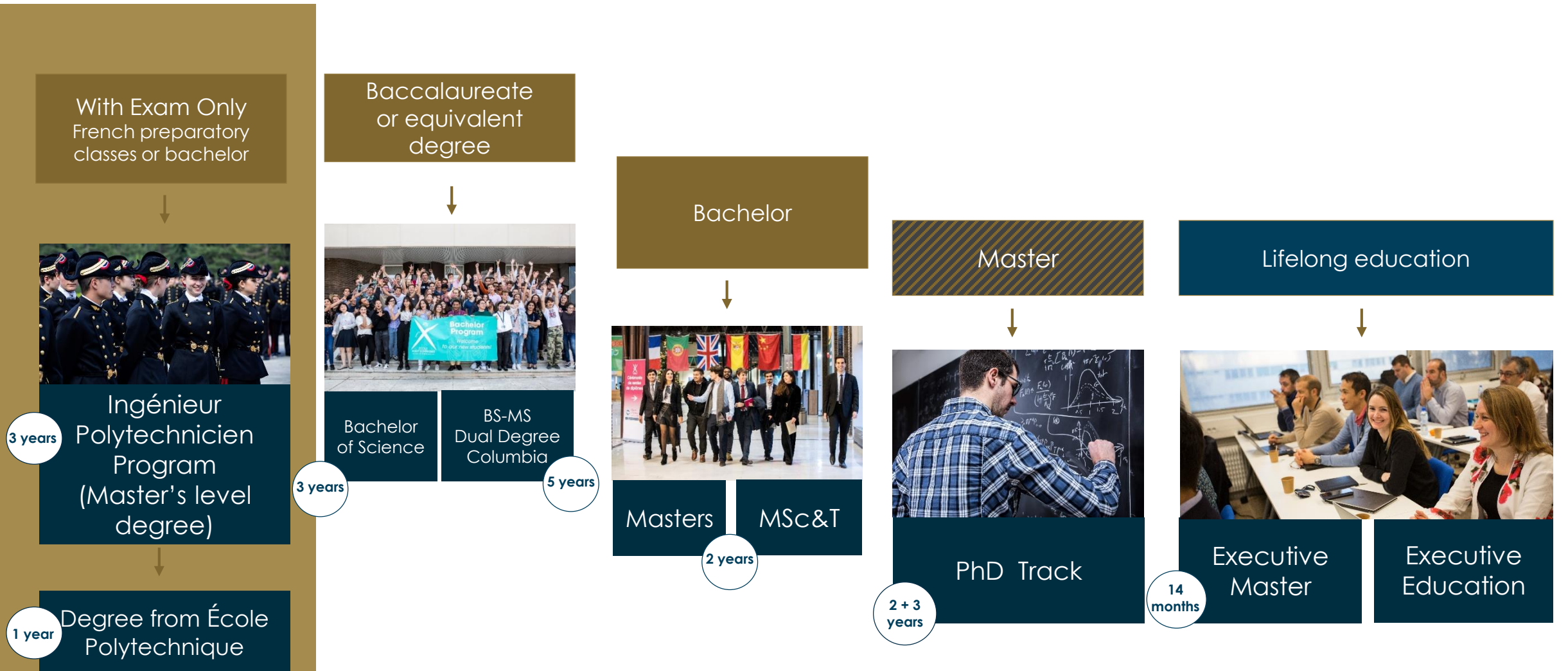
1 astronaut of the  
European Space  
Agency reserve  
First woman  
fighter pilot



2<sup>nd</sup> richest man  
in the world  
CEO of LVMH  
**1/3 of CAC40 Leaders**



# OUR PROGRAMS





# OUR UNIQUENESS



1



Intensive **Fast Track Bachelor program** in only **3 years**

2



**Fast Track BS-MS Dual Degree** in **4,5 years** instead of 7

3



**Strong Alumni network** of **30,000** people around the world

4



**Personal Development Team**

5



**Small groups** of classes **with an average of 15 to 20 students**

# CLASS PROFILE

NUMBER  
OF PARTICIPANTS



156

GENDER



38%

WOMEN

INTERNATIONAL  
STUDENTS



57%

MINOR  
STUDENTS



33%

NATIONALITIES



41

STUDENTS  
OUTSIDE OF  
FRANCE



78%

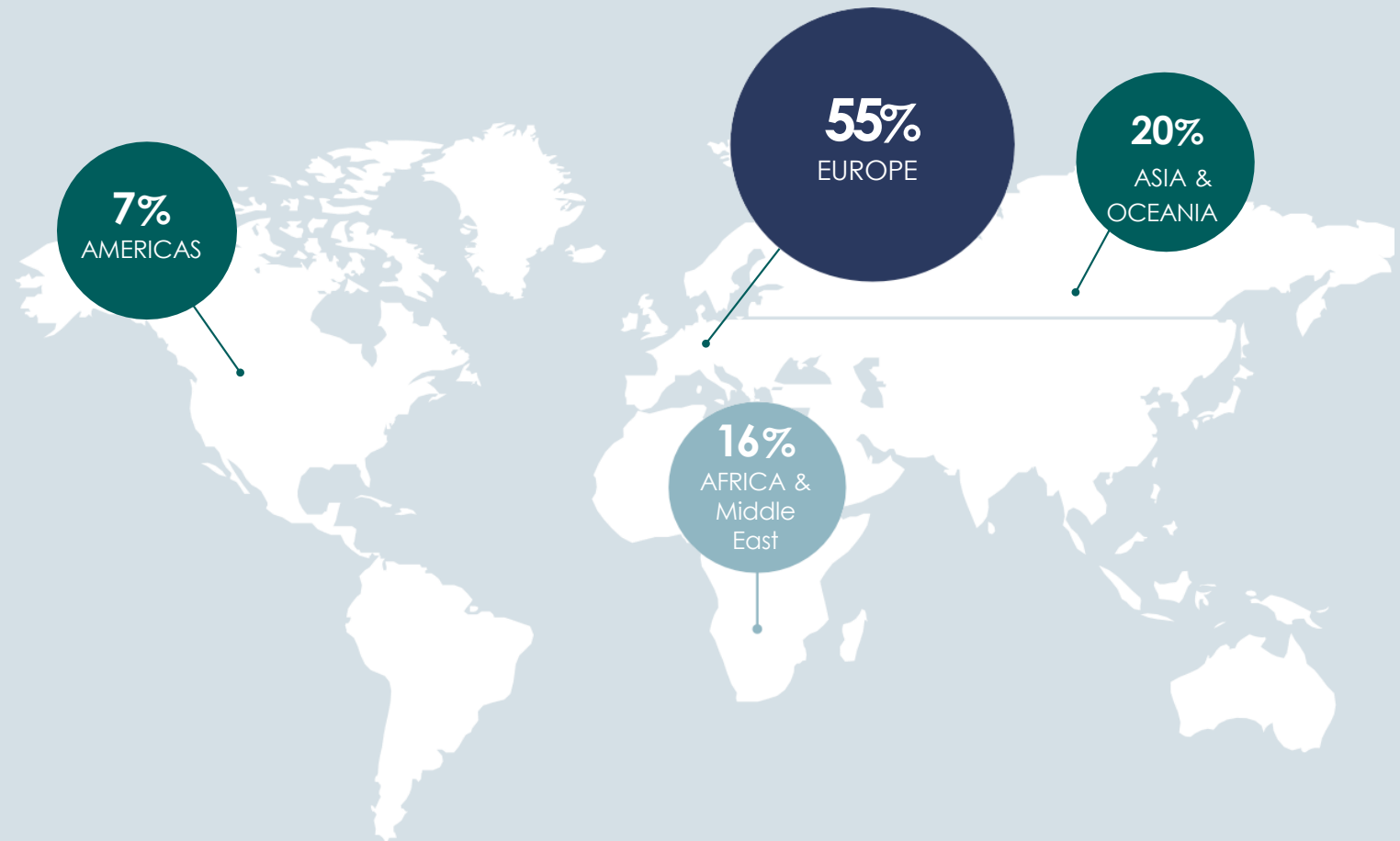
PURSING A  
MASTER/PHD  
TRACK



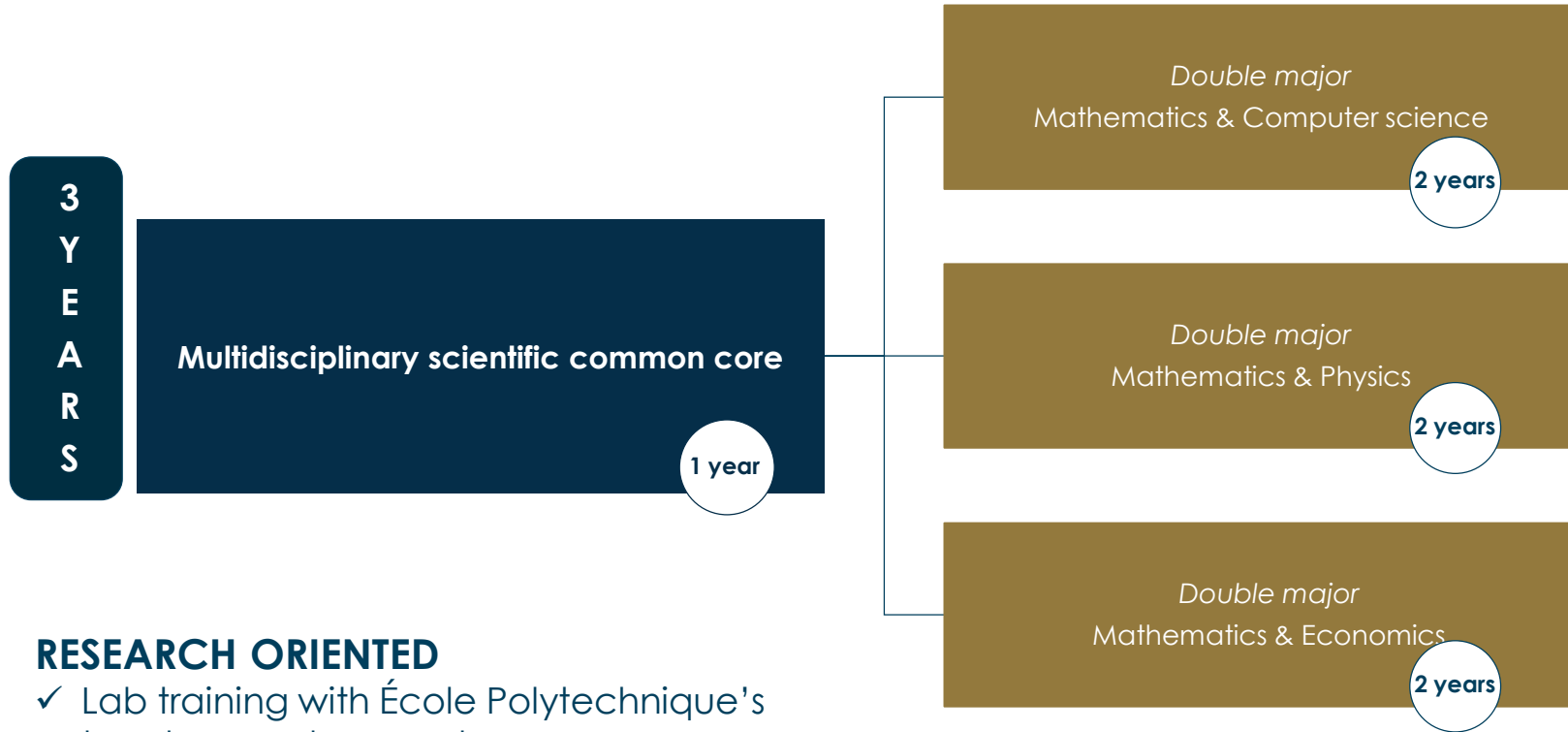
90%

## COUNTRY OF ORIGIN

78% of our students study outside of France



# BACHELOR OF SCIENCE PROGRAM



## RESEARCH ORIENTED

- ✓ Lab training with École Polytechnique's teachers and researchers

Languages, humanities and social sciences, personal development, innovation management, sports

## DOUBLE MAJORS Exemple

### ✓ Math

Discrete Mathematics  
Reduction of Endomorphisms  
Topology and Multivariable Calculus  
Image Analysis

### ✓ Computer Science

Object-oriented programming in C++  
Design & Analysis of Algorithms  
Compilers  
Computer Architecture  
Machine Learning

### ✓ Economics

Econometrics  
Introduction to Finance  
International Trade  
Health and Development  
Economics  
Social and Environmental Responsibility of Business

### ✓ Physics

Lab Sessions  
Wave Optics and Radiation  
Atoms and Lasers  
Mechanics  
Advanced Quantum Physics



# BS-MS DUAL DEGREE PROGRAM

Professional  
Development  
**Part 1**

## Ecole Polytechnique Bachelor of Science Program

Methodology, Math,  
Global Engineering, Focused track

Final Bachelor Semester  
Individualized learning path  
on or off campus  
- Research project

3  
years

Professional  
Development  
**Part 2**

## Columbia Master of Science Programs

18  
months



## Columbia University Master Programs

18  
months

### 9 Master Programs\*

### 3 BS Double tracks

Engineering and  
Physical Sciences BS  
Double track

Maths Computer Science  
BS Double track

Maths Eco BS  
Double track

■ Applied Mathematics



■ Data Science



■ Mechanical Engineering



■ Earth and Environmental



■ Materials Science  
and Engineering



■ Computer Science



■ Applied Physics



■ Financial Engineering



■ Operations Research



# APPLICATION PROCESS

## PRE SELECTIVE



- ✓ High school diploma
- ✓ Top students with very high potential in maths and science
- ✓ Strong academic average
- ✓ Advanced maths + science courses
- ✓ Strong English level (C1)

## ONLINE APPLICATION



- ✓ 2 references (at least 1 math/science instructor)
- ✓ Transcripts (3 previous years including this year)
- ✓ Resume/CV (directly on our platform)
- ✓ Personal statement (3 questions for the bachelor of Science and 5 for the MS-BS program)
- ✓ English language certificate (IELTS, TOEFL, Cambridge only)
- ✓ Application fee 95 €

## Interview



- ✓ 30 minutes Mathematics
- ✓ 15-20 minutes Motivation, Scientific culture

# ADMISSION CALENDAR

**Bachelor  
of  
Sciences**

SEPTEMBER						
Su	Mo	Tu	We	Th	Fr	Sa
					1	2
3	4	5	6	7	8	9
10	11	12	13	14	15	16
17	18	19	20	21	22	23
24	25	26	27	28	29	30

OCTOBER						
Su	Mo	Tu	We	Th	Fr	Sa
1	2	3	4	5	6	7
8	9	10	11	12	13	14
15	16	17	18	19	20	21
22	23	24	25	26	27	28
29	30	31				

NOVEMBER						
Su	Mo	Tu	We	Th	Fr	Sa
			1	2	3	4
5	6	7	8	9	10	11
12	13	14	15	16	17	18
19	20	21	22	23	24	25
26	27	28	29	30		

DECEMBER						
Su	Mo	Tu	We	Th	Fr	Sa
					1	2
3	4	5	6	7	8	9
10	11	12	13	14	15	16
17	18	19	20	21	22	23
24	25	26	27	28	29	30
31						

JANUARY						
Su	Mo	Tu	We	Th	Fr	Sa
1	2	3	4	5	6	7
8	9	10	11	12	13	14
15	16	17	18	19	20	21
22	23	24	25	26	27	28
29	30	31				

FEBRUARY						
Su	Mo	Tu	We	Th	Fr	Sa
			1	2	3	4
5	6	7	8	9	10	11
12	13	14	15	16	17	18
19	20	21	22	23	24	25
26	27	28				

MARCH						
Su	Mo	Tu	We	Th	Fr	Sa
			1	2	3	4
5	6	7	8	9	10	11
12	13	14	15	16	17	18
19	20	21	22	23	24	25
26	27	28	29	30	31	

Interviews	Results
Dec 2023 to Jan 2024	Early Feb 2024
Feb to March 2024	End of March 2024
May 2024	Mid June 2024

**BS-MS**

**Interview Dates (for shortlisted candidates only)**

From September 25, 2023 to January 8, 2024 at midday (CEST)

**Interview Dates**

March 2024

**Final Admission Results**

Before April, 30 2024



# ACCOMMODATION



**Our Bachelor programs offer guaranteed housing on campus:**

Most of our accommodation are:

- Shared apartments (4 or 5 students)
- Individual room with en-suite bathroom
- Shared kitchen
- Large communal rooms
- Coworking spaces
- Music rooms and recording studio

# FEES

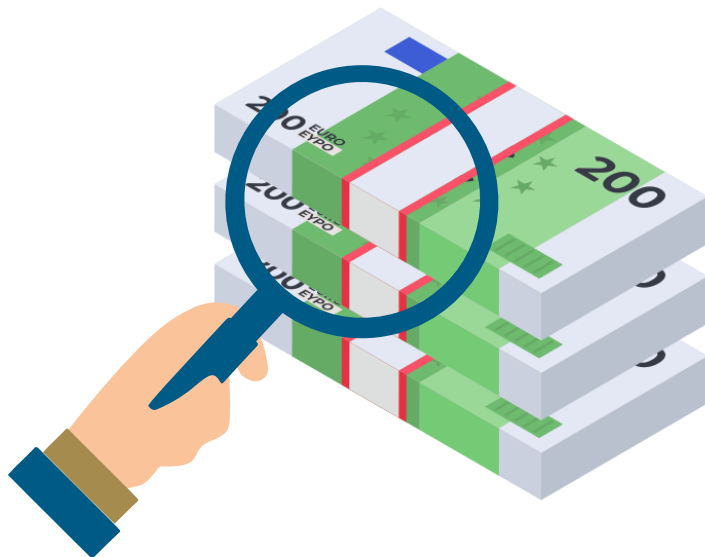
## Scholarship opportunities for students admitted with honors



€15,400 per year



€18,800 per year



Merit-based Financial Aid	Need-based Financial aid
<u>EXCELLENCE SCHOLARSHIP</u> & <u>WOMEN IN SCIENCE</u> <u>SCHOLARSHIP</u>	<u>TUITION FEE WAIVERS</u>
<b>€4,000</b> in 10 monthly installments, At the end of the first year, additional Scholarships are awarded to students who have achieved outstanding academic results while also contributing to student life and activities on campus.	Range from <b>€1,000 to €11,000/€14,100</b> (depending on personal tuition fees). Please note that even the highest tuition fee waiver requires a €1,400 annual tuition fee. Tuition fee waivers only cover tuition costs, any other expenses are the student's responsibility.

For more information about our scholarship,  
please visit our website:

<https://programmes.polytechnique.edu/en/bachelor/costs-and-funding/scholarships-and-financial-aid>





# Merci

